

REGISTER NOW

15th Annual

Insights into

AUTISM

Spanning the Spectrum: Advances in Autism Diagnosis, Practice, and Social Awareness

Friday, February 7, 2025
8 a.m. - 4 p.m.

Old Dominion University's
Eastern Virginia Medical School Campus,
Lester Hall, Norfolk, Virginia

Presented by



MACON & JOAN BROCK VIRGINIA HEALTH SCIENCES
Eastern Virginia Medical School
AT OLD DOMINION UNIVERSITY

 **Children's Hospital
of The King's Daughters**

In collaboration with



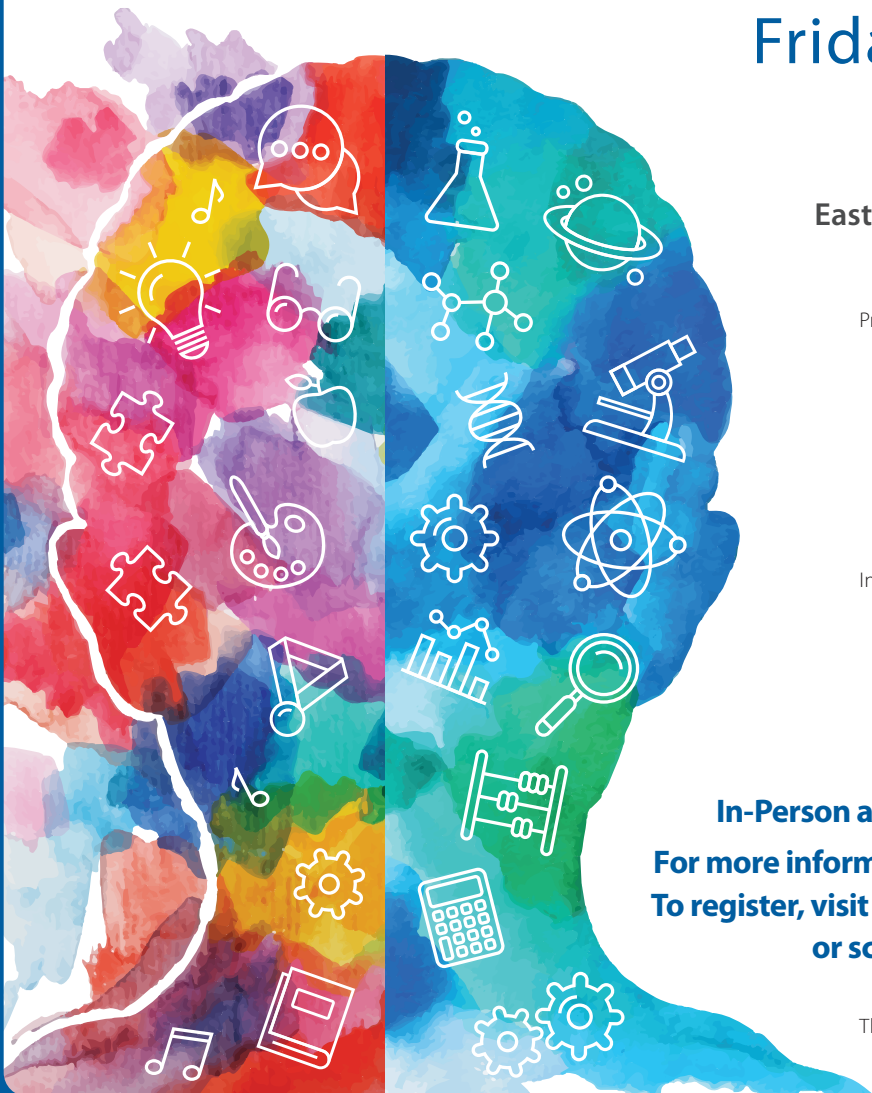
In-Person and Virtual Attendance.

For more information, visit CHKD.org/CME.

To register, visit EVMS.edu/CMERegistration
or scan the QR code.



This activity has been approved for *AMA PRA Category 1 Credit™*.



15th Annual Insights into **AUTISM**

► **Conference Overview**

This activity aims to provide attendees with resources for advocacy and a better understanding of neurodiversity from many perspectives including culturally competent practices and equitable care for neurodiverse individuals, addressing the unique needs of linguistically and culturally minorized populations. Attendees will also learn the latest in autism identification practices, behavioral strategies, psychopharmacology, and digital health innovations including artificial intelligence.

► **Target Audience**

This conference is designed for pediatricians, neurologists, psychologist, psychiatrists, nurses, occupational therapists, speech therapists, art therapists, special education teachers, social workers, other interested allied health professionals, and anyone who wishes to improve care to patients and families diagnosed with an Autism Spectrum Disorder(ASD).

► **Continuing Medical Education Credit**

ACCREDITATION STATEMENT

This activity has been planned and implemented in accordance with the accreditation requirements and policies of the Accreditation Council for Continuing Medical Education (ACCME) through the joint providership of Macon & Joan Brock Virginia Health Sciences at Old Dominion University and Children's Hospital of The King's Daughters. Macon & Joan Brock Virginia Health Sciences at Old Dominion University is accredited by the ACCME to provide continuing medical education for physicians.

CREDIT DESIGNATION

Macon & Joan Brock Virginia Health Sciences at Old Dominion University designates this live activity for a maximum of 6.00 *AMA PRA Category 1 Credits™*. Physicians should claim only the credit commensurate with the extent of their participation in the activity.

► **Continuing Nursing Credit**

Children's Hospital of The King's Daughters is approved as a provider of nursing continuing professional development by the Virginia Nurses Association, an accredited approver by the American Nurses Credentialing Center's Commission on Accreditation.

Children's Hospital of The King's Daughters designates this live activity for a maximum of 6 contact hours.

► **Psychology Credit**

4.75 hours of continuing education credit will be awarded for psychologists. The Macon & Joan Brock Virginia Health Sciences at Old Dominion University is approved by the American Psychological Association to sponsor continuing education for psychologists. The Macon & Joan Brock Virginia Health Sciences at Old Dominion University maintains responsibility for this program and its content. For questions regarding CE for psychologists, please contact Dr. Flaherty, Jennifer.Flaherty@CHKD.org.

► **Cancellation Policy**

Cancellations must be received by 5 p.m. EST, January 31, 2025, to receive a refund; however, an administrative fee of \$10 will be retained on all cancellations. Refunds will not be given for cancellations received after this date or for no shows. Cancellations must be submitted in writing and may be emailed to CME@ODU.edu.

Registration Fees

Physicians: \$185

Other Professionals: \$95

EVMS/ODU Trainees/Students: Free

Other Trainees/Students: \$35

Parent/Caregiver of child(ren) with Autism - In-Person: \$15

Parent/Caregiver of child(ren) with Autism - Virtual: FREE

Persons with Autism - In-Person: \$10

Persons with Autism - Virtual: Free

15th Annual Insights into **AUTISM**

Agenda

- 7:30 a.m. Sign-In/Light Breakfast
- 8:00 a.m. Welcome and Overview
John W. Harrington, MD and Janice Keener, PsyD
- 8:10 a.m. **Equitable Autism Identification Practices for Culturally and Linguistically Minoritized Populations**
Recognize limitations and challenges with traditional autism assessment practices within culturally and linguistically minoritized populations. Identify and promote implementation of culturally and linguistically responsive autism identification strategies.
Bryn Harris, PhD, NCSP, LP
- 9:00 a.m. **Psychopharmacology and Autism**
Define the medications used to treat psychiatric diagnoses in youth with autism. Explain which two medications have FDA approval for the treatment of irritability in autism.
Tamara Palka, MD
- 9:45 a.m. Break
- 10:00 a.m. **Exploration of Avoidant/Restrictive Food Intake Disorder (ARFID) and Autism**
Differentiate between subtypes of ARFID and identify the most common presentation associated with autism. Utilize treatment strategies specific to ARFID in the autism population.
Roslyn Gerwin, DO
- 10:50 a.m. **How Digital Health Is Transforming Early Screening for Autism**
Identify some of the limitations to current methods for autism screening and why accurate screening is important. Describe how digital health and artificial intelligence are being used to develop novel autism screening approaches.
Geraldine Dawson, PhD
- 11:45 a.m. Lunch
- 12:45 p.m. **Generalizing Teaching and Behavioral Strategies from Clinic to Home for Autism**
Assess generalizability of behavioral recommendations for home use for parent success in implementation of behavioral recommendations in the home environment. Apply generalized behavioral recommendations for supporting autistic youth in the home environment post clinic discharge.
Christin McDonald-Fix, MD
- 1:30 p.m. **Profound Autism: Clarifying the Diagnosis, Supports, and Services**
Define profound autism. Recall what support and services are appropriate for patients with profound autism.
Judith Ursitti
- 2:15 p.m. Break
- 2:30 p.m. **5 Lessons for the (Human) Spectrum**
Explain diversities within the autism spectrum. Provide autistic patients with tools and techniques to navigate social situations effectively while staying authentic to themselves. Relate practical life skills, including self-advocacy, emotional regulation, and resilience to autistic patients.
Jennifer Cook
- 3:00 p.m. **Panel Discussion: Love (and Friendship) On the Spectrum: Building the Fundamentals for Lifelong Connection**
Analyze challenges those on the autism spectrum may face in dating. Recommend resources to those on the autism spectrum looking to date.
Moderator: *Jennifer Cook*
- 3:50 p.m. Wrap-up
John W. Harrington, MD and Janice Keener, PsyD
- 4:00 p.m. Adjournment

For more information, visit CHKD.org/CME.
To register, visit EVMS.edu/CMERegistration.

15th Annual Insights into **AUTISM**

Course Directors

John W. Harrington, MD

Vice-President of Quality/Safety and Clinical Integration
Co-Director of General Academic Pediatrics
Vice-Chair of Primary Care
Children's Hospital of The King's Daughters
Professor of Pediatrics
Eastern Virginia Medical School at ODU
Norfolk, VA

Janice Keener, PsyD

Assistant Professor of Clinical Pediatrics
Eastern Virginia Medical School at ODU
Director of Psychological and Assessment Services in
Developmental Pediatrics
Children's Hospital of The King's Daughters
Norfolk, VA

Guest Faculty

Jennifer Cook

Neurodiversity Expert, Consultant, and Author
Charlotte, NC

Geraldine Dawson, PhD

William Cleland Distinguished Professor of Psychiatry and
Behavioral Sciences
Professor of Psychology and Neuroscience and Pediatrics
Duke Center for Autism and Brain Development
Duke University School of Medicine
Durham, NC

Roslyn Gerwin, DO

Director, Pediatric Consultation Psychiatry
The Barbara Bush Children's Hospital at Maine Medical Center
Assistant Clinical Professor
Tufts University School of Medicine
Portland, ME

Bryn Harris, PhD, NCSP, LP

Professor
School of Education and Human Development &
Department of Pediatrics (Developmental Pediatrics)
University of Colorado Denver
Denver, CO

Christin McDonald-Fix, MD

Licensed Psychologist and Licensed and Board-Certified
Behavioral Analyst
Clinical Director of Neurodevelopmental Services at
Children's Hospital of the King's Daughters and Children's
Specialty Group
Assistant Professor of Pediatrics/Division of Child and
Adolescent Psychiatry
Eastern Virginia Medical School at ODU
Norfolk, VA

Tamara Palka, MD

Board Certified Child and Adolescent Psychiatrist
Assistant Professor of Pediatrics
Eastern Virginia Medical School at ODU
Norfolk, VA

Judith Ursitti

Co-Founder and President of Profound Autism Alliance
Boston, MA

Planning Committee

Sarah Chagnon MD
Jennifer M. Flaherty, PhD
Lisa Fore-Arcand, EdD
John W. Harrington, MD
Katelyn Hildreth, MSN, RN, CPN
Janice Keener, PsyD
Kelly A. McCoy, MMHPE
Bailey Merrell
Nicole Miller
Tamara Palka, MD

**For more information, visit CHKD.org/CME.
To register, visit EVMS.edu/CMERegistration.**